

FLUSH LIFT PULL

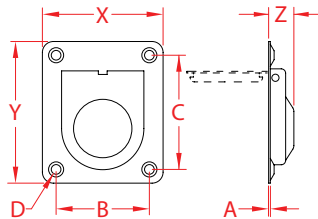
316 STAINLESS STEEL



Import



Precision
Cast



ITEM	A	B	C	D	X (height)	Y (length)	Z (width)	WT (lb)	PACKAGING TYPE	EACH (qty)	INNER (qty)	CARTON (qty)	UPC
S3851-0003	0.03"	1.68"	2.09"	0.15"	2.20"	2.58"	0.43"	0.09	POLYBAG	1	5	375	791506058359

NOTE:
USE 4 #8 FASTENERS. SPRING LOADED. STAMPED VERSION WITH ROUNDED INSIDE EDGE OF PULL RING.
ALL DIMENSIONS ARE NOMINAL (+/- 3%) AND ARE SUBJECT TO CHANGE WITHOUT NOTICE.